

excel

extremely comfortable cross country links

BUS TIMES
from 14th May 2023



from **First Eastern Counties**

buses up to **every 30 mins** between

Norwich
Dereham
Swaffham
Kings Lynn
Wisbech
Peterborough

plus extra **fast** buses up to **every 30 mins** between

Norwich and **Dereham**

TIMES • FARES • MAPS

Welcome aboard...

excel

your frequent, comfortable, cross country connections along the A47 corridor, seven days a week.

It's ideal whether you're commuting, heading to college, catching a train or enjoying a day of leisure exploring one of the fascinating places on route...check out the pages at the end for some ideas.

excellent journeys

No matter when, where or why you travel, there's a journey choice to suit you...we've even given each option a letter to make it easier to find yours, and they'll be shown on the front of the buses too

- A** for **all stops** along the route
- B** the **quickest** way between **Wisbech & Kings Lynn** in as little as **30 mins**
- C** **fast into Norwich** from Swaffham & Kings Lynn in just **50 mins** & **87 mins**
- D** **non-stop** buses between **Dereham & Norwich** taking just **35 mins**

excellent buses

Our dedicated fleet of buses have been designed especially for excel with your comfort in mind. As well as being some of the most environmentally-friendly buses currently available, we've added some great features we just know you'll love...



super comfy, high-backed seats, trimmed in real leather to a bespoke design



seat-back phone holders for entertainment on the move



plenty of space for long legs, shopping or designer handbags



a choice of single seats, doubles or around tables



free WiFi, USB & wireless power

travelling together?

get a **High5**

unlimited travel, all day for up to 5 people*

Dereham - Norwich with a **Norwich Zone** ticket **£10**

all of excel **£20**

all of our buses with a **Network** ticket **£25**

buy on app or on bus





Kings Lynn

excel is a limited stop service. Buses will serve the stops shown on the timetable and town maps plus the following points:

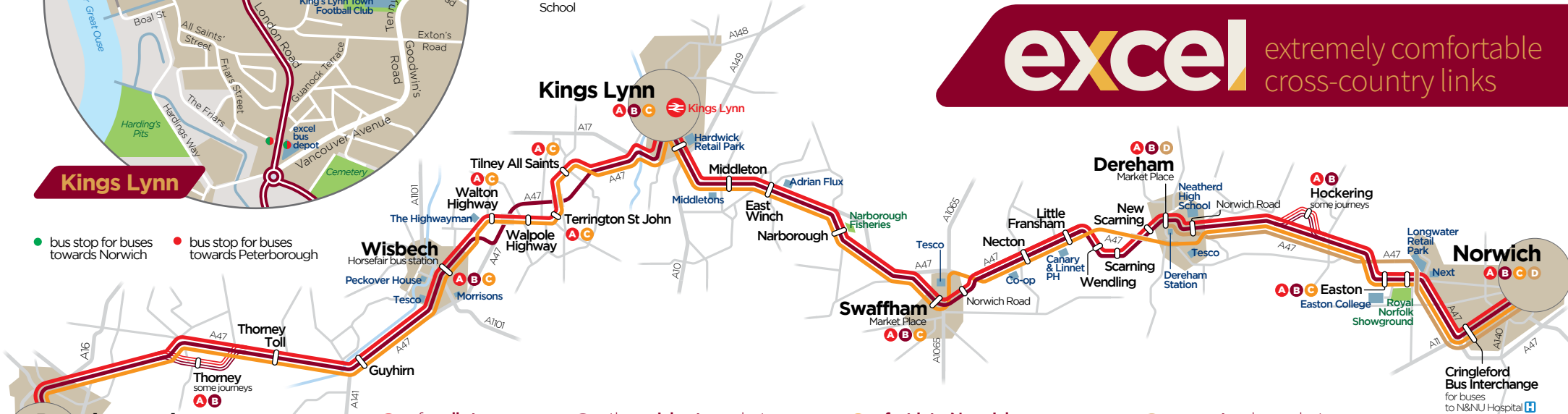
- Norwich Newmarket Road, Lime Tree Road • Royal Norfolk Showground • Easton, Marlingford Rd • Scarning, Church • Wendling, Station Road • Swaffham, Norwich Road/Peddlers Meadow • East Winch, Walton Road • Kings Lynn, Hardwick McDonalds • Kings Lynn, Nar Ouse Way • A47 Eau Brink Road • Tilney All Saints, School Rd
- all stops in Wisbech • Thorney, School



Dereham

excel extremely comfortable cross-country links

- bus stop for buses towards Norwich
- bus stop for buses towards Peterborough



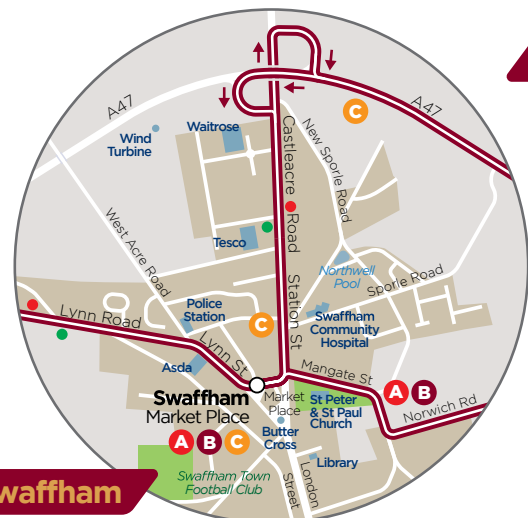
- A** for all stops along the route
- B** the quickest way between Wisbech & Kings Lynn
- C** fast into Norwich from Swaffham & Kings Lynn
- D** non-stop buses between Dereham & Norwich



Peterborough



Wisbech



Swaffham



Norwich

Cringleford Bus Interchange for buses to N&NU Hospital

excel^lent value fares

return tickets between the two points as shown buy on the bus

| | | | | | |
|-------------------------|-------------------------|----------------------|----------------------|-------------------------|-------------------------|
| Norwich | Dereham | Swaffham | Kings Lynn | Wisbech | Peterboro' |
| Norwich zone day ticket | adult £7 YP £5.20 | adult £6 YP £4.50 | adult £6 YP £4.50 | adult £6 YP £4.50 | adult £6 YP £4.50 |
| Excel zone day ticket | adult £9.60 YP £7.20 | adult £7 YP £5.20 | adult £7 YP £5.20 | adult £9.60 YP £7.20 | adult £9.60 YP £7.20 |

for longer journeys buy an **excel** day ticket for unlimited travel

| | | | | |
|---------|-----------|-----------------|------------------|----------------------|
| all day | adult £12 | young person £9 | High5 group* £20 | buy on app or on bus |
|---------|-----------|-----------------|------------------|----------------------|

make boarding a breeze

get on board and on your way quicker with an mTicket on the First Bus App or pay the driver with contactless or cash



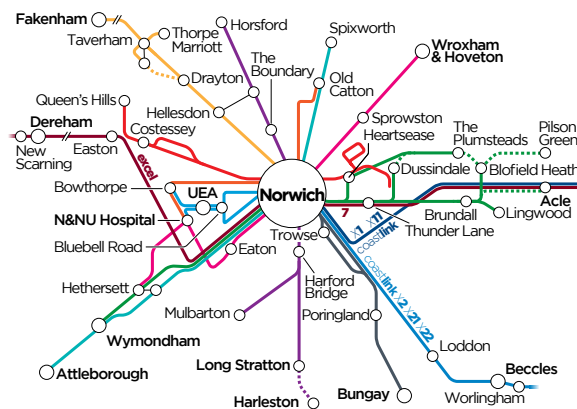
tickets for regular travel

| excel zone valid on the whole excel route | adult | young person | Flexi 5 5 days in 14 | 5-day 5 or 7 consecutive days | Week in 28 days | 10-trips in 28 days | Month |
|---|-----------|------------------|-------------------------|----------------------------------|--------------------|------------------------|--------|
| | adult £26 | young person £20 | £26 | £24 | £26 | £26 | £88 |
| | | on app | on app | on app or on bus | on app | on app | on app |

excel zone tickets can also be used on Pink Line buses between Norwich city centre and the Norfolk & Norwich Hospital

Norwich zone tickets

Between New Scarning & Dereham and Norwich, **excel** is included in our **Norwich Zone** - ideal for easy connections onto any of our frequent colour-coded **Network Norwich** bus routes, that can take you all across the city and beyond. Get times & routes at firstbus.co.uk/easterncounties



| | | | | |
|---------|-------------|-----------------|------------------|----------------------|
| all day | adult £5.30 | young person £4 | High5 group* £10 | buy on app or on bus |
|---------|-------------|-----------------|------------------|----------------------|

| | Flexi 5 5 days in 14 | 5-day 5 or 7 consecutive days | Week in 28 days | 10-trips in 28 days | Month | all of these tickets are valid anywhere in the Norwich Zone |
|--------------|-------------------------|----------------------------------|--------------------|------------------------|------------|---|
| adult | £22 | £20 | £22 | £22 | £75 | |
| young person | £16.50 on app | £15 on app or on bus | £16.50 on app | £16.50 on app | £56 on app | |

network tickets

valid on all of our buses

| | all Day | Flexi 5 5 days in 14 | 5-day 5 or 7 consecutive days | Week in 28 days | 10-trips in 28 days | Month |
|--------------|-------------------|-------------------------|----------------------------------|--------------------|------------------------|------------|
| adult | £14 | £32 | £30 | £32 | £32 | £110 |
| young person | £10 on app or bus | £24 on app | £23 on app or on bus | £24 on app | £24 on app | £83 on app |

don't worry be appy

buy tickets, plan journeys and get real time info

download the FREE First Bus App



trashed the cash?

pay with contactless



why wait until it's late?

concession pass holders travel at young person single fares from 0830 to 0930 on weekdays (and for free after that as usual)



for information & updates

firstbus.co.uk/easterncounties

@FirstNorwich

First Eastern Counties

Norwich Travel Centre
on Castle Meadow
Monday - Friday 0930-1330 & 1430-1630

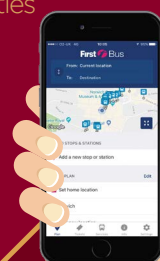
Traveline
www.traveline.info 0871 200 22 33

or to get in touch

Customer Services 0345 646 0707
Weekdays 0800-1800

Contact us at firstbus.co.uk/easterncounties

Important note: All fares, tickets, zones and other non-timetable information are correct as at 30/01/22 and are subject to change during the life of this booklet. Please check our website firstbus.co.uk/easterncounties for up to date info.



be appy

buy tickets, plan journeys & find your bus in real time

on the free First Bus App



| | A | A | D | C | A | A | D | B | B | D | C | D | D | B | D | C | D | B | D | C |
|-----------------------------------|------|------|------|------|------|------|------|------|------|------|------|------|------|------|------|------|------|------|------|------|
| Peterborough Bus Station | | | | | | | | | | | | | | 0700 | | 0730 | | 0810 | | 0840 |
| Peterborough Rail Station | | | | | | | | | | | | | | 0704 | | 0734 | | 0814 | | 0844 |
| Thorney Fish & Chip shop | | | | | | | | | | | | | | 0722 | | ▼ | | 0832 | | ▼ |
| Thorney Toll | | | | | | | | | | | | | | 0727 | | 0754 | | 0837 | | 0904 |
| Guyhirn Petrol Station | | | | | | | | | | | | | | 0733 | | 0800 | | 0843 | | 0910 |
| Wisbech Cromwell Road/Tesco | | | | | | | | | | | | | | 0743 | | 0810 | | 0853 | | 0920 |
| Wisbech Bus Station | | | | | | | | | | | | | | 0748 | | 0815 | | 0858 | | 0925 |
| Wisbech Bus Station | | | | | | | | 0635 | 0640 | | 0710 | | | 0755 | | 0820 | | 0905 | | 0930 |
| Wisbech Lynn Road/Walton Road | | | | | | | | 0639 | 0644 | | 0714 | | | 0759 | | 0824 | | 0909 | | 0934 |
| Walpole Highway School Rd shelter | | | | | | | | ▼ | ▼ | | 0722 | | | ▼ | | 0832 | | ▼ | | 0942 |
| Terrington St John bus shelter | | | | | | | | ▼ | ▼ | | 0726 | | | ▼ | | 0836 | | ▼ | | 0946 |
| Kings Lynn Bus Station | | | | | | | | 0705 | 0710 | | 0745 | | | 0825 | | 0900 | | 0935 | | 1005 |
| Kings Lynn Bus Station | 0535 | 0605 | 0645 | 0645 | | | | 0710 | 0715 | | 0755 | | | 0840 | | 0910 | | 0940 | | 1010 |
| Kings Lynn Rail Station | 0537 | 0607 | 0647 | 0647 | | | | 0712 | 0717 | | 0757 | | | 0842 | | 0912 | | 0942 | | 1012 |
| Kings Lynn Hardwick Road/Tesco | 0542 | 0612 | 0652 | 0652 | | | | 0717 | 0722 | | 0802 | | | 0847 | | 0917 | | 0947 | | 1017 |
| Middleton Church | 0548 | 0618 | 0658 | 0658 | | | | 0723 | 0728 | | 0808 | | | 0853 | | 0923 | | 0953 | | 1023 |
| East Winch Carpenters Arms | 0553 | 0623 | 0703 | 0703 | | | | 0728 | 0733 | | 0813 | | | 0858 | | 0928 | | 0958 | | 1028 |
| Narborough Cross Road | 0600 | 0630 | 0710 | 0710 | | | | 0735 | 0740 | | 0820 | | | 0905 | | 0935 | | 1005 | | 1035 |
| Swaffham Market Place | 0608 | 0638 | 0718 | 0718 | | | | 0743 | 0748 | | 0828 | | | 0913 | | 0943 | | 1013 | | 1043 |
| Swaffham Market Place | 0612 | 0642 | 0722 | 0722 | | | | 0747 | 0752 | | 0832 | | | 0917 | | 0947 | | 1017 | | 1047 |
| Necton A47 bus stop | 0619 | 0649 | 0729 | 0729 | | | | 0754 | 0759 | | 0839 | | | 0924 | | 0954 | | 1024 | | 1054 |
| Little Fransham Canary & Linnet | 0622 | 0652 | 0732 | 0732 | | | | 0757 | 0802 | | 0842 | | | 0927 | | 0957 | | 1027 | | 1057 |
| Scarning Chestnut Road | 0633 | 0703 | ▼ | 0743 | | | | 0808 | 0813 | | ▼ | | | 0938 | | ▼ | | 1038 | | ▼ |
| Dereham Market Place/Barclays | 0635 | 0705 | ▼ | 0745 | | | | 0810 | 0815 | | ▼ | | | 0940 | | ▼ | | 1040 | | ▼ |
| Dereham Market Place/Barclays | 0640 | 0710 | 0730 | ▼ | 0750 | 0745 | 0800 | 0815 | 0820 | 0830 | ▼ | 0900 | 0930 | 0945 | 1000 | ▼ | 1030 | 1045 | 1100 | ▼ |
| Dereham Norwich Rd/Windmill Ave | 0645 | 0715 | 0735 | ▼ | 0755 | 0750 | 0805 | 0820 | 0825 | 0835 | ▼ | 0905 | 0935 | 0950 | 1005 | ▼ | 1035 | 1050 | 1105 | ▼ |
| Hockering bus shelter | 0653 | 0723 | ▼ | ▼ | 0803 | 0758 | ▼ | 0828 | 0833 | ▼ | ▼ | ▼ | ▼ | 0958 | ▼ | ▼ | ▼ | 1058 | ▼ | ▼ |
| Easton Bawburgh Road | 0700 | 0730 | ▼ | 0755 | 0810 | 0810 | ▼ | 0840 | 0845 | ▼ | 0905 | ▼ | ▼ | 1005 | ▼ | 1017 | ▼ | 1105 | ▼ | 1117 |
| Cringleford Bus Interchange | 0708 | 0738 | 0800 | 0805 | 0818 | 0820 | 0830 | 0850 | 0853 | 0900 | 0913 | 0923 | 0953 | 1013 | 1023 | 1025 | 1053 | 1113 | 1123 | 1125 |
| Norwich Bus Station | 0720 | 0750 | 0815 | 0820 | 0830 | 0835 | 0845 | 0905 | 0905 | 0915 | 0925 | 0935 | 1005 | 1025 | 1035 | 1037 | 1105 | 1125 | 1135 | 1137 |

• Times at these stops are estimated

Mondays to Fridays only
Saturdays only
Mondays to Fridays only

| | D | B | D | C | D | B | D | C | D | B | D | C | D | B | D | C | D | B | D | C |
|-----------------------------------|------|------|------|------|------|------|------|------|------|------|------|------|------|------|------|------|------|------|------|------|
| Peterborough Bus Station | | 0910 | | 0940 | | 1010 | | 1040 | | 1110 | | 1140 | | 1210 | | 1240 | | 1310 | | 1340 |
| Peterborough Rail Station | | 0914 | | 0944 | | 1014 | | 1044 | | 1114 | | 1144 | | 1214 | | 1244 | | 1314 | | 1344 |
| Thorney Fish & Chip shop | | 0932 | | ▼ | | 1032 | | ▼ | | 1132 | | ▼ | | 1232 | | ▼ | | 1332 | | ▼ |
| Thorney Toll | | 0937 | | 1004 | | 1037 | | 1104 | | 1137 | | 1204 | | 1237 | | 1304 | | 1337 | | 1404 |
| Guyhirn Petrol Station | | 0943 | | 1010 | | 1043 | | 1110 | | 1143 | | 1210 | | 1243 | | 1310 | | 1343 | | 1410 |
| Wisbech Cromwell Road/Tesco | | 0953 | | 1020 | | 1053 | | 1120 | | 1153 | | 1220 | | 1253 | | 1320 | | 1353 | | 1420 |
| Wisbech Bus Station | | 0958 | | 1025 | | 1058 | | 1125 | | 1158 | | 1225 | | 1258 | | 1325 | | 1358 | | 1425 |
| Wisbech Bus Station | | 1005 | | 1030 | | 1105 | | 1130 | | 1205 | | 1230 | | 1305 | | 1330 | | 1405 | | 1430 |
| Wisbech Lynn Road/Walton Road | | 1009 | | 1034 | | 1109 | | 1134 | | 1209 | | 1234 | | 1309 | | 1334 | | 1409 | | 1434 |
| Walpole Highway School Rd shelter | | ▼ | | 1042 | | ▼ | | 1142 | | ▼ | | 1242 | | ▼ | | 1342 | | ▼ | | 1442 |
| Terrington St John bus shelter | | ▼ | | 1046 | | ▼ | | 1146 | | ▼ | | 1246 | | ▼ | | 1346 | | ▼ | | 1446 |
| Kings Lynn Bus Station | | 1035 | | 1105 | | 1135 | | 1205 | | 1235 | | 1305 | | 1335 | | 1405 | | 1435 | | 1505 |
| Kings Lynn Bus Station | | 1040 | | 1110 | | 1140 | | 1210 | | 1240 | | 1310 | | 1340 | | 1410 | | 1440 | | 1510 |
| Kings Lynn Rail Station | | 1042 | | 1112 | | 1142 | | 1212 | | 1242 | | 1312 | | 1342 | | 1412 | | 1442 | | 1512 |
| Kings Lynn Hardwick Road/Tesco | | 1047 | | 1117 | | 1147 | | 1217 | | 1247 | | 1317 | | 1347 | | 1417 | | 1447 | | 1517 |
| Middleton Church | | 1053 | | 1123 | | 1153 | | 1223 | | 1253 | | 1323 | | 1353 | | 1423 | | 1453 | | 1523 |
| East Winch Carpenters Arms | | 1058 | | 1128 | | 1158 | | 1228 | | 1258 | | 1328 | | 1358 | | 1428 | | 1458 | | 1528 |
| Narborough Cross Road | | 1105 | | 1135 | | 1205 | | 1235 | | 1305 | | 1335 | | 1405 | | 1435 | | 1505 | | 1535 |
| Swaffham Market Place | | 1113 | | 1143 | | 1213 | | 1243 | | 1313 | | 1343 | | 1413 | | 1443 | | 1513 | | 1543 |
| Swaffham Market Place | | 1117 | | 1147 | | 1217 | | 1247 | | 1317 | | 1347 | | 1417 | | 1447 | | 1517 | | 1547 |
| Necton A47 bus stop | | 1124 | | 1154 | | 1224 | | 1254 | | 1324 | | 1354 | | 1424 | | 1454 | | 1524 | | 1554 |
| Little Fransham Canary & Linnet | | 1127 | | 1157 | | 1227 | | 1257 | | 1327 | | 1357 | | 1427 | | 1457 | | 1527 | | 1557 |
| Scarning Chestnut Road | | 1138 | | ▼ | | 1238 | | ▼ | | 1338 | | ▼ | | 1438 | | ▼ | | 1538 | | ▼ |
| Dereham Market Place/Barclays | | 1140 | | ▼ | | 1240 | | ▼ | | 1340 | | ▼ | | 1440 | | ▼ | | 1540 | | ▼ |
| Dereham Market Place/Barclays | 1130 | 1145 | 1200 | ▼ | 1230 | 1245 | 1300 | ▼ | 1330 | 1345 | 1400 | ▼ | 1430 | 1445 | 1500 | ▼ | 1530 | 1545 | 1600 | ▼ |
| Dereham Norwich Rd/Windmill Ave | 1135 | 1150 | 1205 | ▼ | 1235 | 1250 | 1305 | ▼ | 1335 | 1350 | 1405 | ▼ | 1435 | 1450 | 1505 | ▼ | 1535 | 1550 | 1605 | ▼ |
| Hockering bus shelter | | 1158 | | ▼ | | 1258 | | ▼ | | 1358 | | ▼ | | 1458 | | ▼ | | 1558 | | ▼ |
| Easton Bawburgh Road | | ▼ | 1205 | ▼ | 1217 | ▼ | 1305 | ▼ | 1317 | ▼ | 1405 | ▼ | 1417 | ▼ | 1505 | ▼ | 1517 | ▼ | 1605 | ▼ |
| Cringleford Bus Interchange | 1153 | 1213 | 1223 | 1225 | 1253 | 1313 | 1323 | 1325 | 1353 | 1413 | 1423 | 1425 | 1453 | 1513 | 1523 | 1525 | 1553 | 1613 | 1623 | 1625 |
| Norwich Bus Station | 1205 | 1225 | 1235 | 1237 | 1305 | 1325 | 1335 | 1337 | 1405 | 1425 | 1435 | 1437 | 1505 | 1525 | 1535 | 1537 | 1605 | 1625 | 1635 | 1637 |

• Times at these stops are estimated

| | D | B | C | D | D | B | C | B | A | B | A | B | A | A | A | A |
|---|------|------|------|------|------|------|------|------|------|------|------|------|------|------|------|------|
| Peterborough Bus Station | | 1410 | 1440 | | | 1510 | 1540 | 1610 | 1640 | 1710 | 1740 | 1810 | 1840 | 1940 | 2040 | 2245 |
| Peterborough Rail Station | | 1414 | 1444 | | | 1514 | 1544 | 1614 | 1644 | 1714 | 1744 | 1814 | 1844 | 1944 | 2044 | 2248 |
| Thorney Fish & Chip shop | | 1432 | ▼ | | | 1532 | ▼ | 1637 | ▼ | 1737 | ▼ | 1837 | ▼ | 2001 | 2101 | 2303 |
| Thorney Toll | | 1437 | 1504 | | | 1537 | 1609 | 1642 | 1709 | 1742 | 1809 | 1842 | 1904 | 2006 | 2106 | 2308 |
| Guyhirn Petrol Station | | 1443 | 1510 | | | 1543 | 1615 | 1648 | 1715 | 1748 | 1815 | 1848 | 1910 | 2011 | 2111 | 2313 |
| Wisbech Cromwell Road/Tesco | | 1453 | 1520 | | | 1553 | 1625 | 1658 | 1725 | 1758 | 1825 | 1858 | 1920 | 2020 | 2120 | 2322 |
| Wisbech Bus Station <i>arrive</i> | | 1458 | 1525 | | | 1558 | 1630 | 1703 | 1730 | 1803 | 1830 | 1903 | 1925 | 2025 | 2125 | 2327 |
| Wisbech Bus Station <i>depart</i> | | 1505 | 1530 | | | 1605 | 1635 | 1710 | 1735 | 1810 | 1835 | 1910 | 1930 | 2030 | 2130 | 2330 |
| Wisbech Lynn Road/Walton Road | | 1509 | 1534 | | | 1614 | 1644 | 1719 | 1744 | 1814 | 1839 | 1914 | 1933 | 2033 | 2133 | 2333 |
| Walpole Highway School Rd shelter | | ▼ | 1542 | | | ▼ | 1652 | ▼ | 1752 | ▼ | 1847 | ▼ | 1941 | 2041 | 2141 | 2341 |
| Terrington St John bus shelter | | ▼ | 1546 | | | ▼ | 1656 | ▼ | 1756 | ▼ | 1851 | ▼ | 1944 | 2044 | 2144 | 2344 |
| Kings Lynn Bus Station <i>arrive</i> | | 1535 | 1605 | | | 1640 | 1715 | 1745 | 1815 | 1840 | 1910 | 1940 | 2000 | 2100 | 2200 | 2400 |
| Kings Lynn Bus Station <i>depart</i> | | 1540 | 1610 | | | 1645 | 1720 | 1750 | | 1850 | | | | 2105 | | |
| Kings Lynn Rail Station | | 1542 | 1612 | | | 1647 | 1722 | 1752 | | 1852 | | | | 2107 | | |
| Kings Lynn Hardwick Road/Tesco | | 1547 | 1617 | | | 1652 | 1727 | 1757 | | 1857 | | | | 2112 | | |
| Middleton Church | | 1553 | 1623 | | | 1658 | 1733 | 1803 | | 1903 | | | | 2118 | | |
| East Winch Carpenters Arms | | 1558 | 1628 | | | 1703 | 1738 | 1808 | | 1908 | | | | 2123 | | |
| Narborough Cross Road | | 1605 | 1635 | | | 1710 | 1745 | 1815 | | 1915 | | | | 2130 | | |
| Swaffham Market Place <i>arrive</i> | | 1613 | 1643 | | | 1718 | 1753 | 1823 | | 1923 | | | | 2138 | | |
| Swaffham Market Place <i>depart</i> | | 1617 | 1647 | | | 1722 | 1755 | 1825 | | 1925 | | | | 2140 | | |
| Necton A47 bus stop | | 1624 | 1654 | | | 1729 | 1802 | 1832 | | 1932 | | | | 2147 | | |
| Little Fransham Canary & Linnet | | 1627 | 1657 | | | 1732 | 1805 | 1835 | | 1935 | | | | 2150 | | |
| Scarning Chestnut Road | | 1638 | ▼ | | | 1743 | ▼ | 1846 | | 1946 | | | | 2201 | | |
| Dereham Market Place/Barclays <i>arrive</i> | | 1640 | ▼ | | | 1745 | ▼ | 1848 | | 1948 | | | | 2203 | | |
| Dereham Market Place/Barclays <i>depart</i> | 1630 | 1645 | ▼ | 1705 | 1735 | 1750 | ▼ | 1850 | | 1950 | | | | 2205 | | |
| Dereham Norwich Rd/Windmill Ave | 1635 | 1650 | ▼ | 1710 | 1740 | 1755 | ▼ | 1855 | | 1955 | | | | 2209 | | |
| Hockering bus shelter | ▼ | 1658 | ▼ | ▼ | ▼ | 1803 | ▼ | 1903 | | 2003 | | | | 2217 | | |
| Easton Bawburgh Road | ▼ | 1705 | 1717 | ▼ | ▼ | 1810 | 1825 | 1910 | | 2010 | | | | 2224 | | |
| Cringleford Bus Interchange for | 1653 | 1713 | 1725 | 1728 | 1758 | 1818 | 1833 | 1918 | | 2018 | | | | 2232 | | |
| Norwich Bus Station | 1705 | 1725 | 1737 | 1740 | 1810 | 1830 | 1845 | 1930 | | 2030 | | | | 2242 | | |

• Times at these stops are estimated

BUS TIMES from 14th May 2023

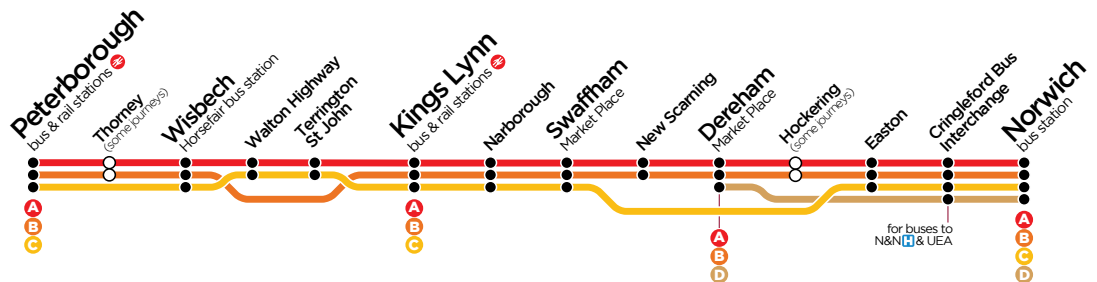
excellent discounts

on the best value monthly tickets around



find out more at firstbus.co.uk/ctclub

- A** for all stops along the route
- B** the quickest way between Wisbech & Kings Lynn
- C** fast into Norwich from Swaffham & Kings Lynn
- D** non-stop buses between Dereham & Norwich



Important note: All fares, tickets, zones and other non-timetable information are correct as at 30/01/22 and are subject to change during the life of this booklet. Please check our website firstbus.co.uk/easterncounties for up to date information.

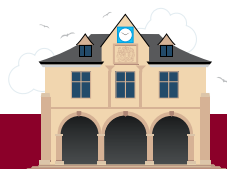
travelling together?
get a High5

unlimited travel, all day
for up to 5 people*

Dereham - Norwich with a Norwich Zone ticket **£10**

all of excel **£20**

all of our buses with a Network ticket **£25**
buy on app or on bus



| | A | A | A | A | A | A | A | A | A | A | A | A | A | A |
|---|------|------|------|------|------|------|------|------|------|------|------|------|------|------|
| Peterborough Bus Station | | | | 0900 | 1000 | 1100 | 1200 | 1300 | 1400 | 1500 | 1600 | 1700 | 1800 | 1900 |
| Peterborough Rail Station | | | | 0904 | 1004 | 1104 | 1204 | 1304 | 1404 | 1504 | 1604 | 1704 | 1804 | 1904 |
| Thorney Fish & Chip shop | | | | 0921 | 1021 | 1121 | 1221 | 1321 | 1421 | 1521 | 1621 | 1721 | 1821 | 1921 |
| Thorney Toll | | | | 0926 | 1026 | 1126 | 1226 | 1326 | 1426 | 1526 | 1626 | 1726 | 1826 | 1926 |
| Guyhirn Petrol Station | | | | 0932 | 1032 | 1132 | 1232 | 1332 | 1432 | 1532 | 1632 | 1732 | 1832 | 1932 |
| Wisbech Cromwell Road/Tesco | | | | 0941 | 1041 | 1141 | 1241 | 1341 | 1441 | 1541 | 1641 | 1741 | 1841 | 1941 |
| Wisbech Bus Station <i>arrive</i> | | | | 0946 | 1046 | 1146 | 1246 | 1346 | 1446 | 1546 | 1646 | 1746 | 1846 | 1946 |
| Wisbech Bus Station <i>depart</i> | | | 0850 | 0950 | 1050 | 1150 | 1250 | 1350 | 1450 | 1550 | 1650 | 1750 | 1850 | 1950 |
| Wisbech Lynn Road/Walton Road | | | 0854 | 0954 | 1054 | 1154 | 1254 | 1354 | 1454 | 1554 | 1654 | 1754 | 1854 | 1954 |
| Walpole Highway School Rd shelter | | | 0902 | 1002 | 1102 | 1202 | 1302 | 1402 | 1502 | 1602 | 1702 | 1802 | 1902 | 2002 |
| Terrington St John bus shelter | | | 0906 | 1006 | 1106 | 1206 | 1306 | 1406 | 1506 | 1606 | 1706 | 1806 | 1906 | 2006 |
| Kings Lynn Bus Station <i>arrive</i> | | | 0924 | 1024 | 1124 | 1224 | 1324 | 1424 | 1524 | 1624 | 1724 | 1824 | 1924 | 2024 |
| Kings Lynn Bus Station <i>depart</i> | 0730 | 0830 | 0930 | 1030 | 1130 | 1230 | 1330 | 1430 | 1530 | 1630 | 1730 | 1830 | 1930 | |
| Kings Lynn Rail Station | 0732 | 0832 | 0932 | 1032 | 1132 | 1232 | 1332 | 1432 | 1532 | 1632 | 1732 | 1832 | 1932 | |
| Kings Lynn Hardwick Road/Tesco | 0737 | 0837 | 0937 | 1037 | 1137 | 1237 | 1337 | 1437 | 1537 | 1637 | 1737 | 1837 | 1937 | |
| Middleton Church | 0743 | 0843 | 0943 | 1043 | 1143 | 1243 | 1343 | 1443 | 1543 | 1643 | 1743 | 1843 | 1943 | |
| East Winch Carpenters Arms | 0748 | 0848 | 0948 | 1048 | 1148 | 1248 | 1348 | 1448 | 1548 | 1648 | 1748 | 1848 | 1948 | |
| Narborough Cross Road | 0755 | 0855 | 0955 | 1055 | 1155 | 1255 | 1355 | 1455 | 1555 | 1655 | 1755 | 1855 | 1955 | |
| Swaffham Market Place <i>arrive</i> | 0803 | 0903 | 1003 | 1103 | 1203 | 1303 | 1403 | 1503 | 1603 | 1703 | 1803 | 1903 | 2003 | |
| Swaffham Market Place <i>depart</i> | 0807 | 0907 | 1007 | 1107 | 1207 | 1307 | 1407 | 1507 | 1607 | 1707 | 1807 | 1907 | 2007 | |
| Necton A47 bus stop | 0814 | 0914 | 1014 | 1114 | 1214 | 1314 | 1414 | 1514 | 1614 | 1714 | 1814 | 1914 | 2014 | |
| Little Fransham Canary & Linnet | 0817 | 0917 | 1017 | 1117 | 1217 | 1317 | 1417 | 1517 | 1617 | 1717 | 1817 | 1917 | 2017 | |
| Scarning Chestnut Road | 0828 | 0928 | 1028 | 1128 | 1228 | 1328 | 1428 | 1528 | 1628 | 1728 | 1828 | 1928 | 2028 | |
| Dereham Market Place/Barclays <i>arrive</i> | 0830 | 0930 | 1030 | 1130 | 1230 | 1330 | 1430 | 1530 | 1630 | 1730 | 1830 | 1930 | 2030 | |
| Dereham Market Place/Barclays <i>depart</i> | 0835 | 0935 | 1035 | 1135 | 1235 | 1335 | 1435 | 1535 | 1635 | 1735 | 1835 | 1935 | 2035 | |
| Dereham Norwich Rd/Windmill Ave | 0840 | 0940 | 1040 | 1140 | 1240 | 1340 | 1440 | 1540 | 1640 | 1740 | 1840 | 1940 | 2040 | |
| Hockering bus shelter | 0848 | 0948 | 1048 | 1148 | 1248 | 1348 | 1448 | 1548 | 1648 | 1748 | 1848 | 1948 | 2048 | |
| Easton Bawburgh Road | 0855 | 0955 | 1055 | 1155 | 1255 | 1355 | 1455 | 1555 | 1655 | 1755 | 1855 | 1955 | 2055 | |
| Cringleford Bus Interchange for | 0903 | 1003 | 1103 | 1203 | 1303 | 1403 | 1503 | 1603 | 1703 | 1803 | 1903 | 2003 | 2103 | |
| Norwich Bus Station | 0915 | 1015 | 1115 | 1215 | 1315 | 1415 | 1515 | 1615 | 1715 | 1815 | 1915 | 2015 | 2115 | |

• Times at these stops are estimated

BUS TIMES from 14th May 2023

| | A | B | A | B | A | B | A | B | A | D | B | C | D | B | C | D | B | D | C | D |
|---|------|------|------|------|------|------|------|------|------|------|------|------|------|------|------|------|------|------|------|------|
| Norwich Bus Station | | | | | | 0600 | 0630 | 0700 | 0730 | 0745 | 0800 | 0840 | 0845 | 0900 | 0940 | 0945 | 1000 | 1015 | 1040 | 1045 |
| Cringleford Bus Interchange for | | | | | | 0610 | 0640 | 0710 | 0740 | 0755 | 0810 | 0850 | 0855 | 0910 | 0950 | 0955 | 1010 | 1025 | 1050 | 1055 |
| Easton Bawburgh Road | | | | | | 0620 | 0650 | 0720 | 0750 | ▼ | 0820 | 0900 | ▼ | 0920 | 1000 | ▼ | 1020 | ▼ | 1100 | ▼ |
| Hockering bus shelter | | | | | | ▼ | ▼ | ▼ | 0758 | ▼ | 0828 | ▼ | ▼ | 0928 | ▼ | ▼ | 1028 | ▼ | ▼ | ▼ |
| Dereham Norwich Rd/Windmill Ave | | | | | | 0633 | 0703 | 0733 | 0806 | 0813 | 0836 | ▼ | 0913 | 0936 | ▼ | 1013 | 1036 | 1043 | ▼ | 1113 |
| Dereham Market Place/Barclays <i>arrive</i> | | | | | | 0640 | 0710 | 0740 | 0813 | 0820 | 0843 | ▼ | 0920 | 0943 | ▼ | 1020 | 1043 | 1050 | ▼ | 1120 |
| Dereham Market Place/Barclays <i>depart</i> | | | | | | 0645 | 0715 | 0745 | 0815 | ▼ | 0845 | ▼ | ▼ | 0945 | ▼ | ▼ | 1045 | ▼ | ▼ | ▼ |
| Scarning Chestnut Road | | | | | | 0647 | 0717 | 0747 | 0817 | ▼ | 0847 | ▼ | ▼ | 0947 | ▼ | ▼ | 1047 | ▼ | ▼ | ▼ |
| Little Fransham Canary & Linnet | | | | | | 0656 | 0726 | 0756 | 0826 | ▼ | 0856 | 0921 | ▼ | 0956 | 1021 | ▼ | 1056 | ▼ | 1121 | ▼ |
| Necton A47 bus stop | | | | | | 0659 | 0729 | 0759 | 0829 | ▼ | 0859 | 0924 | ▼ | 0959 | 1024 | ▼ | 1059 | ▼ | 1124 | ▼ |
| Swaffham Market Place/TIC <i>arrive</i> | | | | | | 0710 | 0740 | 0810 | 0840 | ▼ | 0910 | 0935 | ▼ | 1010 | 1035 | ▼ | 1110 | ▼ | 1135 | ▼ |
| Swaffham Market Place/TIC <i>depart</i> | | | | | | 0715 | 0745 | 0815 | 0845 | ▼ | 0915 | 0940 | ▼ | 1015 | 1040 | ▼ | 1115 | ▼ | 1140 | ▼ |
| Narborough Cross Road | | | | | | 0724 | 0754 | 0824 | 0854 | ▼ | 0924 | 0949 | ▼ | 1024 | 1049 | ▼ | 1124 | ▼ | 1149 | ▼ |
| East Winch Carpenters Arms | | | | | | 0730 | 0800 | 0830 | 0900 | ▼ | 0930 | 0955 | ▼ | 1030 | 1055 | ▼ | 1130 | ▼ | 1155 | ▼ |
| Middleton Church | | | | | | 0734 | 0804 | 0834 | 0904 | ▼ | 0934 | 0959 | ▼ | 1034 | 1059 | ▼ | 1134 | ▼ | 1159 | ▼ |
| Kings Lynn Hardwick Road/Tesco | | | | | | 0740 | 0810 | 0840 | 0910 | ▼ | 0940 | 1005 | ▼ | 1040 | 1105 | ▼ | 1140 | ▼ | 1205 | ▼ |
| Kings Lynn Bus Station <i>arrive</i> | | | | | | 0750 | 0820 | 0850 | 0918 | ▼ | 0948 | 1013 | ▼ | 1048 | 1113 | ▼ | 1148 | ▼ | 1213 | ▼ |
| Kings Lynn Bus Station <i>depart</i> | 0530 | 0600 | 0630 | 0700 | 0730 | 0800 | 0830 | 0900 | 0925 | ▼ | 0955 | 1025 | ▼ | 1055 | 1125 | ▼ | 1155 | ▼ | 1225 | ▼ |
| Kings Lynn Rail Station | 0532 | 0602 | 0632 | 0702 | 0732 | 0802 | 0832 | 0902 | 0927 | ▼ | 0957 | 1027 | ▼ | 1057 | 1127 | ▼ | 1157 | ▼ | 1227 | ▼ |
| Terrington St John bus shelter | 0549 | ▼ | 0649 | ▼ | 0749 | ▼ | 0850 | ▼ | 0945 | ▼ | ▼ | 1045 | ▼ | ▼ | 1145 | ▼ | ▼ | ▼ | 1245 | ▼ |
| Walpole Highway Post Office shelter | 0551 | ▼ | 0651 | ▼ | 0751 | ▼ | 0852 | ▼ | 0947 | ▼ | ▼ | 1047 | ▼ | ▼ | 1147 | ▼ | ▼ | ▼ | 1247 | ▼ |
| Wisbech Lynn Road/Walton Road | 0600 | 0625 | 0700 | 0725 | 0800 | 0825 | 0901 | 0925 | 0956 | ▼ | 1020 | 1056 | ▼ | 1120 | 1156 | ▼ | 1220 | ▼ | 1256 | ▼ |
| Wisbech Bus Station <i>arrive</i> | 0605 | 0630 | 0705 | 0730 | 0805 | 0830 | 0906 | 0930 | 1001 | ▼ | 1025 | 1101 | ▼ | 1125 | 1201 | ▼ | 1225 | ▼ | 1301 | ▼ |
| Wisbech Bus Station <i>depart</i> | 0610 | 0635 | 0710 | 0735 | 0810 | 0835 | 0910 | 0935 | 1005 | ▼ | 1030 | 1105 | ▼ | 1130 | 1205 | ▼ | 1230 | ▼ | 1305 | ▼ |
| Wisbech Cromwell Road/Tesco | 0614 | 0639 | 0714 | 0739 | 0814 | 0839 | 0914 | 0939 | 1009 | ▼ | 1034 | 1109 | ▼ | 1134 | 1209 | ▼ | 1234 | ▼ | 1309 | ▼ |
| Guyhirn Petrol Station | 0624 | 0649 | 0724 | 0749 | 0824 | 0849 | 0924 | 0949 | 1019 | ▼ | 1044 | 1119 | ▼ | 1144 | 1219 | ▼ | 1244 | ▼ | 1319 | ▼ |
| Thorney Toll | 0629 | 0654 | 0729 | 0754 | 0829 | 0854 | 0929 | 0954 | 1024 | ▼ | 1049 | 1124 | ▼ | 1149 | 1224 | ▼ | 1249 | ▼ | 1324 | ▼ |
| Thorney Fish & Chip shop | ▼ | 0701 | ▼ | 0801 | ▼ | 0901 | ▼ | 1001 | ▼ | ▼ | 1056 | ▼ | ▼ | 1156 | ▼ | ▼ | 1256 | ▼ | ▼ | ▼ |
| Peterborough Bus Station | 0652 | 0722 | 0757 | 0827 | 0857 | 0922 | 0952 | 1022 | 1047 | ▼ | 1117 | 1147 | ▼ | 1217 | 1247 | ▼ | 1317 | ▼ | 1347 | ▼ |

Mondays to Fridays only

arrives 5 mins earlier on Saturdays

Mondays to Fridays only

| | B | D | C | D | B | D | C | D | B | D | C | D | B | D | C | D | B | D | C | D |
|---------------------------------------|------|------|------|------|------|------|------|------|------|------|------|------|------|------|------|------|------|------|------|------|
| Norwich Bus Station | 1100 | 1115 | 1140 | 1145 | 1200 | 1215 | 1240 | 1245 | 1300 | 1315 | 1340 | 1345 | 1400 | 1415 | 1440 | 1445 | 1500 | 1515 | 1540 | 1545 |
| Cringleford Bus Interchange for | 1110 | 1125 | 1150 | 1155 | 1210 | 1225 | 1250 | 1255 | 1310 | 1325 | 1350 | 1355 | 1410 | 1425 | 1450 | 1455 | 1510 | 1530 | 1555 | 1600 |
| Easton Bawburgh Road | 1120 | ▼ | 1200 | ▼ | 1220 | ▼ | 1300 | ▼ | 1320 | ▼ | 1400 | ▼ | 1420 | ▼ | 1500 | ▼ | 1520 | ▼ | 1605 | ▼ |
| Hockering bus shelter | 1128 | ▼ | ▼ | ▼ | 1228 | ▼ | ▼ | ▼ | 1328 | ▼ | ▼ | ▼ | 1428 | ▼ | ▼ | ▼ | 1528 | ▼ | ▼ | ▼ |
| Dereham Norwich Rd/Windmill Ave • | 1136 | 1143 | ▼ | 1213 | 1236 | 1243 | ▼ | 1313 | 1336 | 1343 | ▼ | 1413 | 1436 | 1443 | ▼ | 1513 | 1536 | 1548 | ▼ | 1618 |
| Dereham Market Place/Barclays arrive | 1143 | 1150 | ▼ | 1220 | 1243 | 1250 | ▼ | 1320 | 1343 | 1350 | ▼ | 1420 | 1443 | 1450 | ▼ | 1520 | 1543 | 1555 | ▼ | 1625 |
| Dereham Market Place/Barclays depart | 1145 | ▼ | ▼ | ▼ | 1245 | ▼ | ▼ | ▼ | 1345 | ▼ | ▼ | ▼ | 1445 | ▼ | ▼ | ▼ | 1545 | ▼ | ▼ | ▼ |
| Scarning Chestnut Road • | 1147 | ▼ | ▼ | ▼ | 1247 | ▼ | ▼ | ▼ | 1347 | ▼ | ▼ | ▼ | 1447 | ▼ | ▼ | ▼ | 1547 | ▼ | ▼ | ▼ |
| Little Fransham Canary & Linnet | 1156 | ▼ | 1221 | ▼ | 1256 | ▼ | 1321 | ▼ | 1356 | ▼ | 1421 | ▼ | 1456 | ▼ | 1521 | ▼ | 1556 | ▼ | 1626 | ▼ |
| Necton A47 bus stop • | 1159 | ▼ | 1224 | ▼ | 1259 | ▼ | 1324 | ▼ | 1359 | ▼ | 1424 | ▼ | 1459 | ▼ | 1524 | ▼ | 1559 | ▼ | 1629 | ▼ |
| Swaffham Market Place/TIC arrive | 1210 | ▼ | 1235 | ▼ | 1310 | ▼ | 1335 | ▼ | 1410 | ▼ | 1435 | ▼ | 1510 | ▼ | 1535 | ▼ | 1610 | ▼ | 1640 | ▼ |
| Swaffham Market Place/TIC depart | 1215 | ▼ | 1240 | ▼ | 1315 | ▼ | 1340 | ▼ | 1415 | ▼ | 1440 | ▼ | 1515 | ▼ | 1540 | ▼ | 1615 | ▼ | 1642 | ▼ |
| Narborough Cross Road | 1224 | ▼ | 1249 | ▼ | 1324 | ▼ | 1349 | ▼ | 1424 | ▼ | 1449 | ▼ | 1524 | ▼ | 1549 | ▼ | 1624 | ▼ | 1651 | ▼ |
| East Winch Carpenters Arms • | 1230 | ▼ | 1255 | ▼ | 1330 | ▼ | 1355 | ▼ | 1430 | ▼ | 1455 | ▼ | 1530 | ▼ | 1555 | ▼ | 1630 | ▼ | 1657 | ▼ |
| Middleton Church • | 1234 | ▼ | 1259 | ▼ | 1334 | ▼ | 1359 | ▼ | 1434 | ▼ | 1459 | ▼ | 1534 | ▼ | 1559 | ▼ | 1634 | ▼ | 1701 | ▼ |
| Kings Lynn Hardwick Road/Tesco • | 1240 | ▼ | 1305 | ▼ | 1340 | ▼ | 1405 | ▼ | 1440 | ▼ | 1505 | ▼ | 1540 | ▼ | 1605 | ▼ | 1640 | ▼ | 1707 | ▼ |
| Kings Lynn Bus Station arrive | 1248 | ▼ | 1313 | ▼ | 1348 | ▼ | 1413 | ▼ | 1448 | ▼ | 1513 | ▼ | 1548 | ▼ | 1613 | ▼ | 1648 | ▼ | 1715 | ▼ |
| Kings Lynn Bus Station depart | 1255 | ▼ | 1325 | ▼ | 1355 | ▼ | 1425 | ▼ | 1455 | ▼ | 1525 | ▼ | 1555 | ▼ | 1625 | ▼ | 1655 | ▼ | 1725 | ▼ |
| Kings Lynn Rail Station | 1257 | ▼ | 1327 | ▼ | 1357 | ▼ | 1427 | ▼ | 1457 | ▼ | 1527 | ▼ | 1557 | ▼ | 1627 | ▼ | 1657 | ▼ | 1727 | ▼ |
| Terrington St John bus shelter | ▼ | ▼ | 1345 | ▼ | ▼ | ▼ | 1445 | ▼ | ▼ | ▼ | 1545 | ▼ | ▼ | ▼ | 1645 | ▼ | ▼ | ▼ | 1744 | ▼ |
| Walpole Highway Post Office shelter • | ▼ | ▼ | 1347 | ▼ | ▼ | ▼ | 1447 | ▼ | ▼ | ▼ | 1547 | ▼ | ▼ | ▼ | 1647 | ▼ | ▼ | ▼ | 1746 | ▼ |
| Wisbech Lynn Road/Walton Road • | 1320 | ▼ | 1356 | ▼ | 1420 | ▼ | 1456 | ▼ | 1520 | ▼ | 1556 | ▼ | 1620 | ▼ | 1656 | ▼ | 1720 | ▼ | 1755 | ▼ |
| Wisbech Bus Station arrive | 1325 | ▼ | 1401 | ▼ | 1425 | ▼ | 1501 | ▼ | 1525 | ▼ | 1601 | ▼ | 1625 | ▼ | 1701 | ▼ | 1725 | ▼ | 1800 | ▼ |
| Wisbech Bus Station depart | 1330 | ▼ | 1405 | ▼ | 1430 | ▼ | 1505 | ▼ | 1530 | ▼ | 1605 | ▼ | 1630 | ▼ | 1705 | ▼ | 1730 | ▼ | ▼ | ▼ |
| Wisbech Cromwell Road/Tesco • | 1334 | ▼ | 1409 | ▼ | 1434 | ▼ | 1509 | ▼ | 1534 | ▼ | 1609 | ▼ | 1634 | ▼ | 1709 | ▼ | 1734 | ▼ | ▼ | ▼ |
| Guyhirn Petrol Station • | 1344 | ▼ | 1419 | ▼ | 1444 | ▼ | 1519 | ▼ | 1544 | ▼ | 1619 | ▼ | 1644 | ▼ | 1719 | ▼ | 1744 | ▼ | ▼ | ▼ |
| Thorney Toll | 1349 | ▼ | 1424 | ▼ | 1449 | ▼ | 1524 | ▼ | 1549 | ▼ | 1624 | ▼ | 1649 | ▼ | 1724 | ▼ | 1749 | ▼ | ▼ | ▼ |
| Thorney Fish & Chip shop | 1356 | ▼ | ▼ | ▼ | 1456 | ▼ | ▼ | ▼ | 1556 | ▼ | ▼ | ▼ | 1656 | ▼ | ▼ | ▼ | 1756 | ▼ | ▼ | ▼ |
| Peterborough Bus Station | 1417 | ▼ | 1447 | ▼ | 1517 | ▼ | 1547 | ▼ | 1617 | ▼ | 1647 | ▼ | 1717 | ▼ | 1747 | ▼ | 1817 | ▼ | ▼ | ▼ |

| | A | D | C | D | A | D | C | D | A | A | A | A | A | A |
|---------------------------------------|------|------|------|------|------|------|------|------|------|------|------|------|------|------|
| Norwich Bus Station | 1610 | 1620 | 1640 | 1650 | 1710 | 1720 | 1740 | 1750 | 1810 | 1840 | 1940 | 2040 | 2140 | 2250 |
| Cringleford Bus Interchange for | 1625 | 1635 | 1655 | 1705 | 1725 | 1735 | 1755 | 1805 | 1820 | 1850 | 1950 | 2050 | 2150 | 2300 |
| Easton Bawburgh Road | 1635 | ▼ | 1705 | ▼ | 1735 | ▼ | 1805 | ▼ | 1830 | 1900 | 2000 | 2100 | 2200 | 2310 |
| Hockering bus shelter | 1643 | ▼ | ▼ | ▼ | 1743 | ▼ | ▼ | ▼ | 1838 | 1908 | 2008 | 2108 | 2208 | 2318 |
| Dereham Norwich Rd/Windmill Ave • | 1651 | 1653 | ▼ | 1723 | 1751 | 1753 | ▼ | 1823 | 1846 | 1916 | 2016 | 2116 | 2216 | 2326 |
| Dereham Market Place/Barclays arrive | 1658 | 1700 | ▼ | 1730 | 1758 | 1800 | ▼ | 1830 | 1853 | 1923 | 2023 | 2123 | 2223 | 2333 |
| Dereham Market Place/Barclays depart | 1700 | ▼ | ▼ | ▼ | 1800 | ▼ | ▼ | ▼ | 1855 | ▼ | 2025 | ▼ | ▼ | ▼ |
| Scarning Chestnut Road • | 1702 | ▼ | ▼ | ▼ | 1802 | ▼ | ▼ | ▼ | 1857 | ▼ | 2027 | ▼ | ▼ | ▼ |
| Little Fransham Canary & Linnet | 1711 | ▼ | 1726 | ▼ | 1811 | ▼ | 1826 | ▼ | 1906 | ▼ | 2036 | ▼ | ▼ | ▼ |
| Necton A47 bus stop • | 1714 | ▼ | 1729 | ▼ | 1814 | ▼ | 1829 | ▼ | 1909 | ▼ | 2039 | ▼ | ▼ | ▼ |
| Swaffham Market Place/TIC arrive | 1725 | ▼ | 1740 | ▼ | 1825 | ▼ | 1840 | ▼ | 1920 | ▼ | 2048 | ▼ | ▼ | ▼ |
| Swaffham Market Place/TIC depart | 1727 | ▼ | 1742 | ▼ | 1827 | ▼ | 1842 | ▼ | 1922 | ▼ | 2050 | ▼ | ▼ | ▼ |
| Narborough Cross Road | 1736 | ▼ | 1751 | ▼ | 1836 | ▼ | 1851 | ▼ | 1931 | ▼ | 2058 | ▼ | ▼ | ▼ |
| East Winch Carpenters Arms • | 1742 | ▼ | 1757 | ▼ | 1842 | ▼ | 1857 | ▼ | 1937 | ▼ | 2104 | ▼ | ▼ | ▼ |
| Middleton Church • | 1746 | ▼ | 1801 | ▼ | 1846 | ▼ | 1901 | ▼ | 1941 | ▼ | 2108 | ▼ | ▼ | ▼ |
| Kings Lynn Hardwick Road/Tesco • | 1752 | ▼ | 1807 | ▼ | 1852 | ▼ | 1907 | ▼ | 1947 | ▼ | 2114 | ▼ | ▼ | ▼ |
| Kings Lynn Bus Station arrive | 1800 | ▼ | 1815 | ▼ | 1900 | ▼ | 1915 | ▼ | 1955 | ▼ | 2122 | ▼ | ▼ | ▼ |
| Kings Lynn Bus Station depart | 1805 | ▼ | ▼ | ▼ | 1905 | ▼ | ▼ | ▼ | 2005 | ▼ | 2125 | ▼ | ▼ | ▼ |
| Kings Lynn Rail Station | 1807 | ▼ | ▼ | ▼ | 1907 | ▼ | ▼ | ▼ | 2007 | ▼ | 2127 | ▼ | ▼ | ▼ |
| Terrington St John bus shelter | 1824 | ▼ | ▼ | ▼ | 1924 | ▼ | ▼ | ▼ | 2024 | ▼ | 2144 | ▼ | ▼ | ▼ |
| Walpole Highway Post Office shelter • | 1826 | ▼ | ▼ | ▼ | 1926 | ▼ | ▼ | ▼ | 2026 | ▼ | 2146 | ▼ | ▼ | ▼ |
| Wisbech Lynn Road/Walton Road • | 1835 | ▼ | ▼ | ▼ | 1935 | ▼ | ▼ | ▼ | 2035 | ▼ | 2155 | ▼ | ▼ | ▼ |
| Wisbech Bus Station arrive | 1840 | ▼ | ▼ | ▼ | 1940 | ▼ | ▼ | ▼ | 2040 | ▼ | 2200 | ▼ | ▼ | ▼ |
| Wisbech Bus Station depart | 1845 | ▼ | ▼ | ▼ | 1945 | ▼ | ▼ | ▼ | 2045 | ▼ | 2202 | ▼ | ▼ | ▼ |
| Wisbech Cromwell Road/Tesco • | 1849 | ▼ | ▼ | ▼ | 1949 | ▼ | ▼ | ▼ | 2049 | ▼ | 2206 | ▼ | ▼ | ▼ |
| Guyhirn Petrol Station • | 1858 | ▼ | ▼ | ▼ | 1958 | ▼ | ▼ | ▼ | 2058 | ▼ | 2215 | ▼ | ▼ | ▼ |
| Thorney Toll | 1903 | ▼ | ▼ | ▼ | 2003 | ▼ | ▼ | ▼ | 2103 | ▼ | 2220 | ▼ | ▼ | ▼ |
| Thorney Fish & Chip shop | 1910 | ▼ | ▼ | ▼ | 2010 | ▼ | ▼ | ▼ | 2110 | ▼ | 2225 | ▼ | ▼ | ▼ |
| Peterborough Bus Station | 1930 | ▼ | ▼ | ▼ | 2030 | ▼ | ▼ | ▼ | 2130 | ▼ | 2240 | ▼ | ▼ | ▼ |

• Times at these stops are estimated

BUS TIMES from 14th May 2023

STUDENT SAVERS

big discounts

on unlimited bus travel

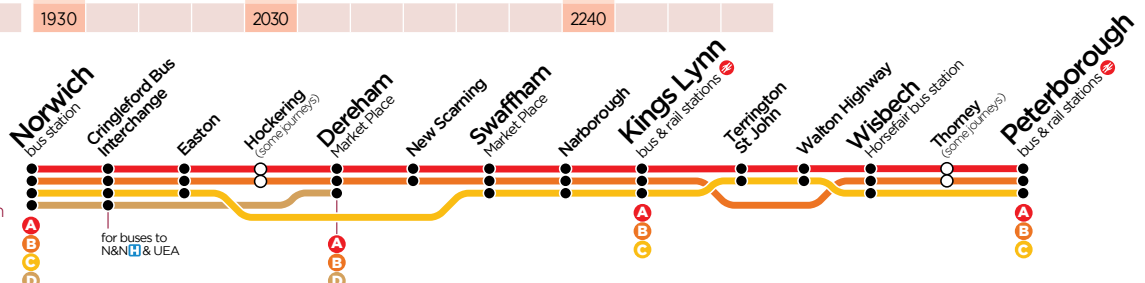
for school, college or 6th form

use at weekends, evenings and half terms too!

get it on mTicket



- A** for all stops along the route
- B** the quickest way between Wisbech & Kings Lynn
- C** fast into Norwich from Swaffham & Kings Lynn
- D** non-stop buses between Dereham & Norwich



| | A | A | A | A | A | A | A | A | A | A | A | A | A | A |
|---------------------------------------|------|------|------|------|------|------|------|------|------|------|------|------|------|---|
| Norwich Bus Station | 0630 | 0730 | 0830 | 0930 | 1030 | 1130 | 1230 | 1330 | 1430 | 1530 | 1630 | 1730 | 1830 | |
| Cringleford Bus Interchange for | 0640 | 0740 | 0840 | 0940 | 1040 | 1140 | 1240 | 1340 | 1440 | 1540 | 1640 | 1740 | 1840 | |
| Easton Bawburgh Road | 0650 | 0750 | 0850 | 0950 | 1050 | 1150 | 1250 | 1350 | 1450 | 1550 | 1650 | 1750 | 1850 | |
| Hockering bus shelter | 0658 | 0758 | 0858 | 0958 | 1058 | 1158 | 1258 | 1358 | 1458 | 1558 | 1658 | 1758 | 1858 | |
| Dereham Norwich Rd/Windmill Ave • | 0706 | 0806 | 0906 | 1006 | 1106 | 1206 | 1306 | 1406 | 1506 | 1606 | 1706 | 1806 | 1906 | |
| Dereham Market Place/Barclays arrive | 0713 | 0813 | 0913 | 1013 | 1113 | 1213 | 1313 | 1413 | 1513 | 1613 | 1713 | 1813 | 1913 | |
| Dereham Market Place/Barclays depart | 0715 | 0815 | 0915 | 1015 | 1115 | 1215 | 1315 | 1415 | 1515 | 1615 | 1715 | 1815 | 1915 | |
| Scarning Chestnut Road • | 0717 | 0817 | 0917 | 1017 | 1117 | 1217 | 1317 | 1417 | 1517 | 1617 | 1717 | 1817 | 1917 | |
| Little Fransham Canary & Linnet | 0726 | 0826 | 0926 | 1026 | 1126 | 1226 | 1326 | 1426 | 1526 | 1626 | 1726 | 1826 | 1926 | |
| Necton A47 bus stop • | 0729 | 0829 | 0929 | 1029 | 1129 | 1229 | 1329 | 1429 | 1529 | 1629 | 1729 | 1829 | 1929 | |
| Swaffham Market Place/TIC arrive | 0740 | 0840 | 0940 | 1040 | 1140 | 1240 | 1340 | 1440 | 1540 | 1640 | 1740 | 1840 | 1940 | |
| Swaffham Market Place/TIC depart | 0745 | 0845 | 0945 | 1045 | 1145 | 1245 | 1345 | 1445 | 1545 | 1645 | 1745 | 1845 | 1945 | |
| Narborough Cross Road | 0754 | 0854 | 0954 | 1054 | 1154 | 1254 | 1354 | 1454 | 1554 | 1654 | 1754 | 1854 | 1954 | |
| East Winch Carpenters Arms • | 0800 | 0900 | 1000 | 1100 | 1200 | 1300 | 1400 | 1500 | 1600 | 1700 | 1800 | 1900 | 2000 | |
| Middleton Church • | 0804 | 0904 | 1004 | 1104 | 1204 | 1304 | 1404 | 1504 | 1604 | 1704 | 1804 | 1904 | 2004 | |
| Kings Lynn Hardwick Road/Tesco • | 0810 | 0910 | 1010 | 1110 | 1210 | 1310 | 1410 | 1510 | 1610 | 1710 | 1810 | 1910 | 2010 | |
| Kings Lynn Bus Station arrive | 0818 | 0918 | 1018 | 1118 | 1218 | 1318 | 1418 | 1518 | 1618 | 1718 | 1818 | 1918 | 2018 | |
| Kings Lynn Bus Station depart | 0725 | 0825 | 0925 | 1025 | 1125 | 1225 | 1325 | 1425 | 1525 | 1625 | 1725 | 1825 | | |
| Kings Lynn Rail Station | 0727 | 0827 | 0927 | 1027 | 1127 | 1227 | 1327 | 1427 | 1527 | 1627 | 1727 | 1827 | | |
| Terrington St John bus shelter | 0745 | 0845 | 0945 | 1045 | 1145 | 1245 | 1345 | 1445 | 1545 | 1645 | 1745 | 1845 | | |
| Walpole Highway Post Office shelter • | 0747 | 0847 | 0947 | 1047 | 1147 | 1247 | 1347 | 1447 | 1547 | 1647 | 1747 | 1847 | | |
| Wisbech Lynn Road/Walton Road • | 0756 | 0856 | 0956 | 1056 | 1156 | 1256 | 1356 | 1456 | 1556 | 1656 | 1756 | 1856 | | |
| Wisbech Bus Station arrive | 0801 | 0901 | 1001 | 1101 | 1201 | 1301 | 1401 | 1501 | 1601 | 1701 | 1801 | 1901 | | |
| Wisbech Bus Station depart | 0805 | 0905 | 1005 | 1105 | 1205 | 1305 | 1405 | 1505 | 1605 | 1705 | 1805 | | | |
| Wisbech Cromwell Road/Tesco • | 0809 | 0909 | 1009 | 1109 | 1209 | 1309 | 1409 | 1509 | 1609 | 1709 | 1809 | | | |
| Guyhirn Petrol Station • | 0819 | 0919 | 1019 | 1119 | 1219 | 1319 | 1419 | 1519 | 1619 | 1719 | 1819 | | | |
| Thorney Toll | 0824 | 0924 | 1024 | 1124 | 1224 | 1324 | 1424 | 1524 | 1624 | 1724 | 1824 | | | |
| Thorney Fish & Chip shop | 0830 | 0930 | 1030 | 1130 | 1230 | 1330 | 1430 | 1530 | 1630 | 1730 | 1830 | | | |
| Peterborough Bus Station | 0850 | 0950 | 1050 | 1150 | 1250 | 1350 | 1450 | 1550 | 1650 | 1750 | 1850 | | | |

BUS TIMES from 14th May 2023

- Times at these stops are estimated

some excellent destinations

Dereham

Dereham is a traditional market town with weekly markets on Tuesdays and Fridays. See the thatched Bishop Bonner's Cottage, dating from 1502 and now housing a museum; the beautifully restored Dereham Windmill with its coffee shop or visit the Mid Norfolk Railway.



travelling together? get a High5

unlimited travel, all day for up to 5 people*

Dereham - Norwich £10 with a Norwich Zone ticket

all of excel £20

all of our buses £25 with a Network ticket buy on app or on bus



One of East Anglia's lesser known destinations, Kings Lynn is a place full of history.



Fine old merchants' houses stretch down to the river between cobbled lanes and the elegant Custom House overlooks the harbour. Or why not take a trip on the King's Lynn ferry to see the King's Lynn quayside and town from the banks of West Lynn.

The popular town centre boasts an extensive pedestrianised shopping area with the modern Vancouver Quarter sitting alongside the traditional shopping areas of the town and being complemented by the regular markets in its two historic market places.

more info www.visitwestnorfolk.com



some **excellent** destinations

Norwich

Recently voted one of the top 10 shopping destinations in the UK, this bustling modern city combines a huge array of shops and restaurants, with a wealth of historical landmarks. The cathedral, castle keep and colourful market are complimented by the modern architecture of The Forum, and the narrow pedestrianised streets of The Lanes with their trendy coffee shops and fashionable boutiques.

And if it's food and drink you're looking for, Norwich will never disappoint! The city boasts an enviable selection of independent free houses alongside trendy wine bars.

Famed for its 'foodie' scene, there's a choice of eating places that is second to none, with new ones appearing all of the time.

visitnorwich.co.uk



Peterborough

Whatever you look for in a city, Peterborough has an enviable mix, from heritage attractions to countryside walks, nature reserves and to shops and restaurants.

As well as the magnificent Norman Cathedral with its beautiful grounds, Peterborough boasts a vibrant shopping centre with independent shops and the large indoor Queensgate shopping mall's host of well known national brands. Whilst for food and drink a diverse selection of restaurants serving cuisine for every palette.

Or why not experience a trip on the historic Nene Valley Railway which offers the chance to experience the thrill of riding a steam engine and explore the picturesque surroundings of the Nene Valley area.

visitpeterborough.com
nvr.org.uk

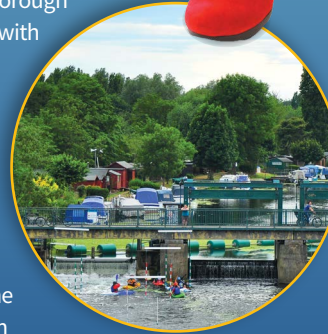
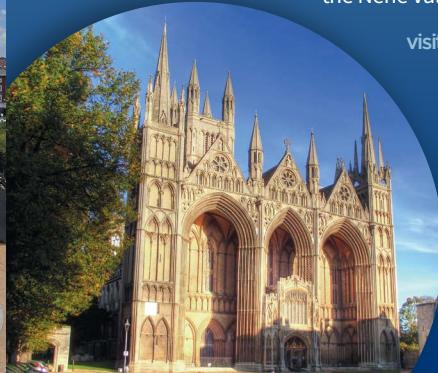


Photo credits:
©Steven Harrison (p23), ©Ben Sutherland (p23), ©Al Millar (p23), ©Spencer Means (p24), ©Jim Linwood (p24), ©Chris Sampson (p25) - all above used via Flickr CC Licence; ©Visit Norwich (p22), ©David Jordan (p22)

Swaffham

One of the most famous market towns in Norfolk, Swaffham boasts a wealth of attractive Georgian buildings facing onto the market square with it's striking Butter Cross and popular Saturday market...there's still an auction

and poultry market as well.

An easy town to wander around, there is a great selection of independent cafes and restaurants.



Wisbech

Wisbech, the Capital of the Fens, is the perfect place for a day out, renowned for its' elegant Georgian architecture - you'll find the best examples along the Brinks or around the Crescent.

Explore Peckover House on North Brink or visit Elgood's Brewery - one of the first Georgian breweries to be built outside London and remaining almost unchanged for more than 200 years. You can sample some of their award winning real ales on a brewery tour or in one of the many Elgood's pubs in town.

